

enLOGIC

Advantage Series

PCT v2.6.0 User Guide



CONTENTS

Installation of PCT.....	3
Downloading the PCT	3
Installing the PCT	4
Home Page	4
Firmware Flashing Tool	5
New SKU Configuration File Creation	8
Creating Configuration File	9
Input Settings	9
Phase Voltage Settings.....	9
Phase Current Settings.....	9
Control Outlets.....	10
Circuit Breaker	10
Datalog/Syslog settings	10
SNMP Settings	11
Trap Settings	11
Datte/Time Settings.....	11
Email Setup	12
Network Settings	12
User Settings	13
User	13
Roles.....	13
LDAP Settings	13
Session Settings	14
Password Policy.....	14
Radius Configuration	14
System Management.....	15
Event Notifications	15
Rack Access Control.....	15
Smart Rack Access	16
Network Settings.....	17
Saving Configuration File.....	18
Uploading Configuration File Through PCT	18
Help Option	19
Appendix	19

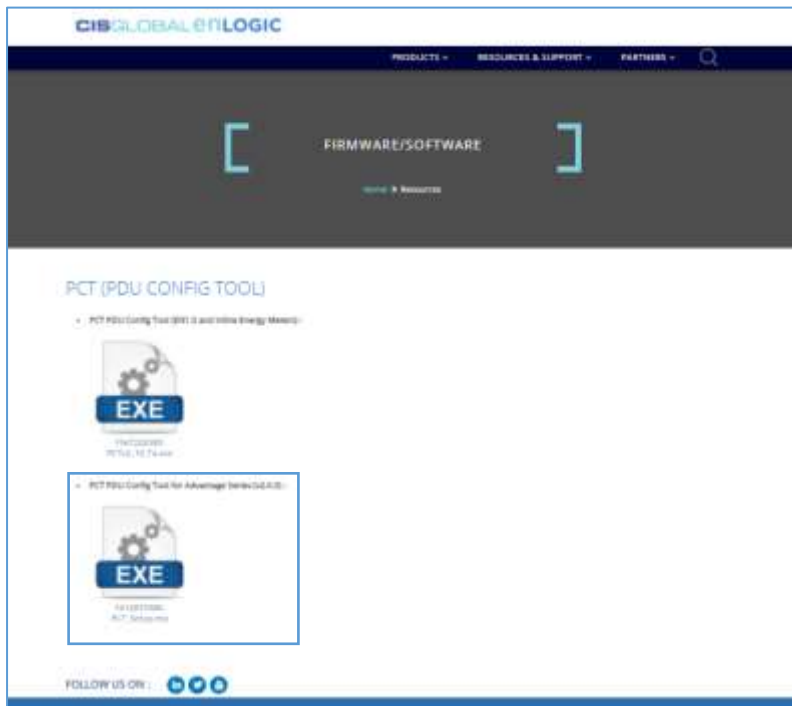
Installation of PCT

Downloading the PCT

1. Go to the Enlogic website <https://enlogic.com/>.
2. Click on the “**RESOURCES & SUPPORT**” tab on the home page.
3. Select the PCT (PDU Config Tool) option in the Firmware/Software section of the dropdown.

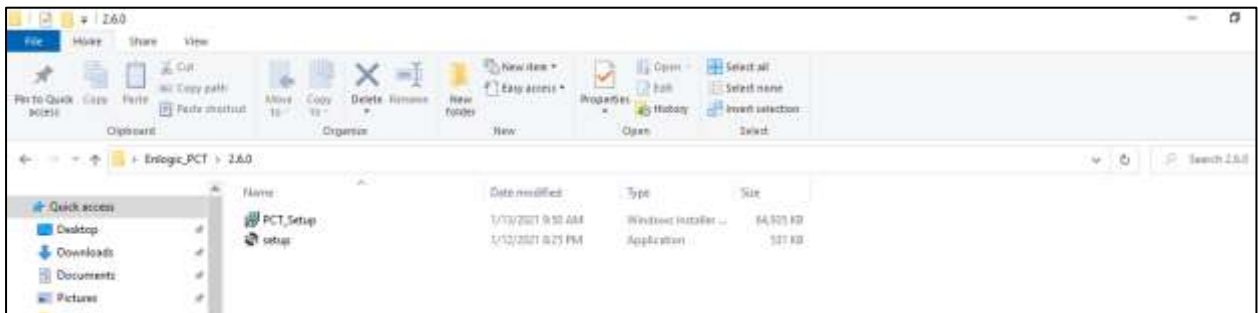


4. Click on the PCT_Setup.msi to download it.



Installing the PCT

1. Double click on the PCT_Setup.msi file.

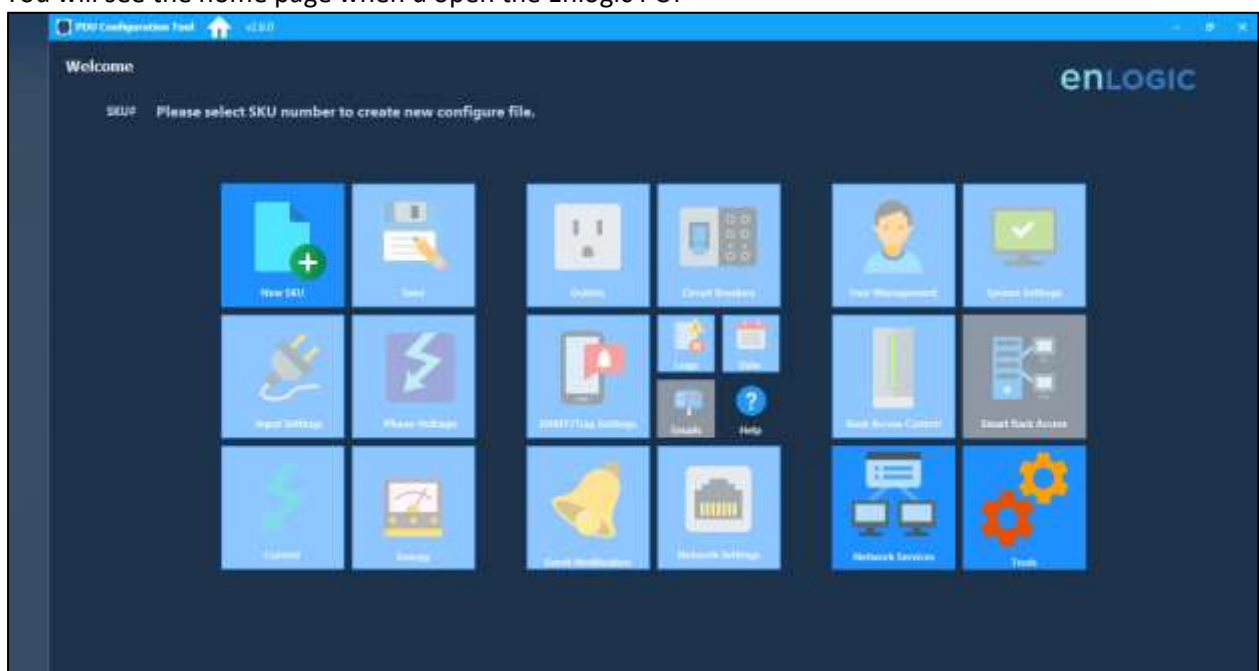


2. Click on the “Next” option to proceed the “Finish” and the tool will be installed.
3. Click on the CIS-PCT-2.0 icon to open the tool.



Home Page

You will see the home page when u open the Enlogic PCT



Firmware Flashing Tool

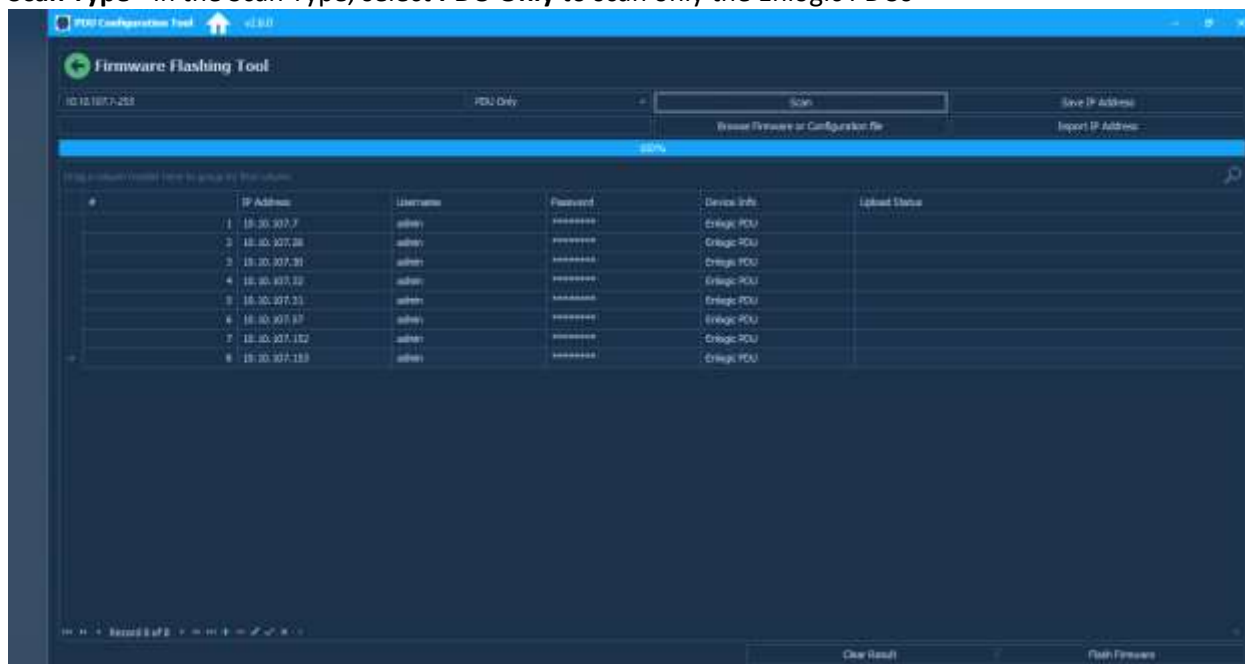
Before working on the PCT make sure of the following:

- The SNMP with IP 0.0.0.0 or the system IP (on which the tool is installed) should be enabled. Putting the PDU to default will enable the IP(0.0.0.0)
- Enable SSH with default port 22
- Enable FTPS with default port 21

Go to **Tools** in the PCT home page to upload the Firmware

Scan - Give the IP range and scan for the IPs in the network. It will list out all the IPs in the network. The format of the scan range should be **192.168.0.1-255** (No spaces between the -)

Scan Type - In the Scan Type, select **PDU Only** to scan only the Enlogic PDUs



After scan, it will list out only the Enlogic PDU IPs in the network with the default username and default password

The default username and password displayed will be 'admin' and '12345678'

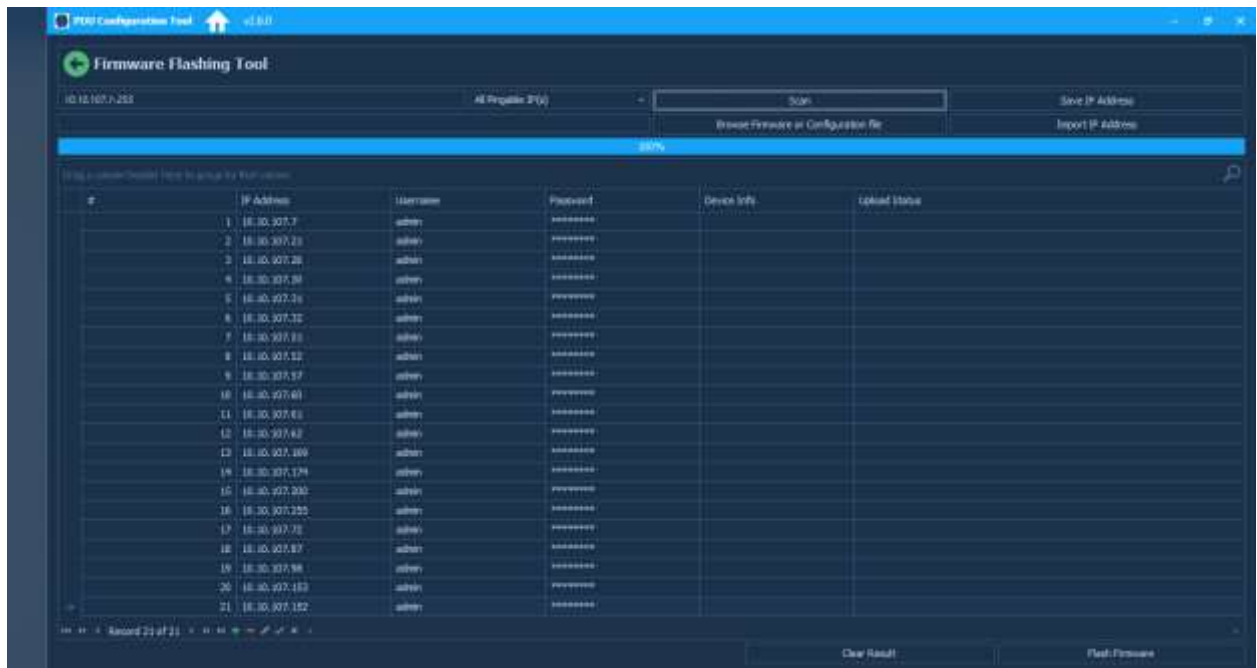
You can change it to any valid username of 'admin' privilege to upload the firmware/ configuration file

Enter the current password of the PDU in the **Password** field

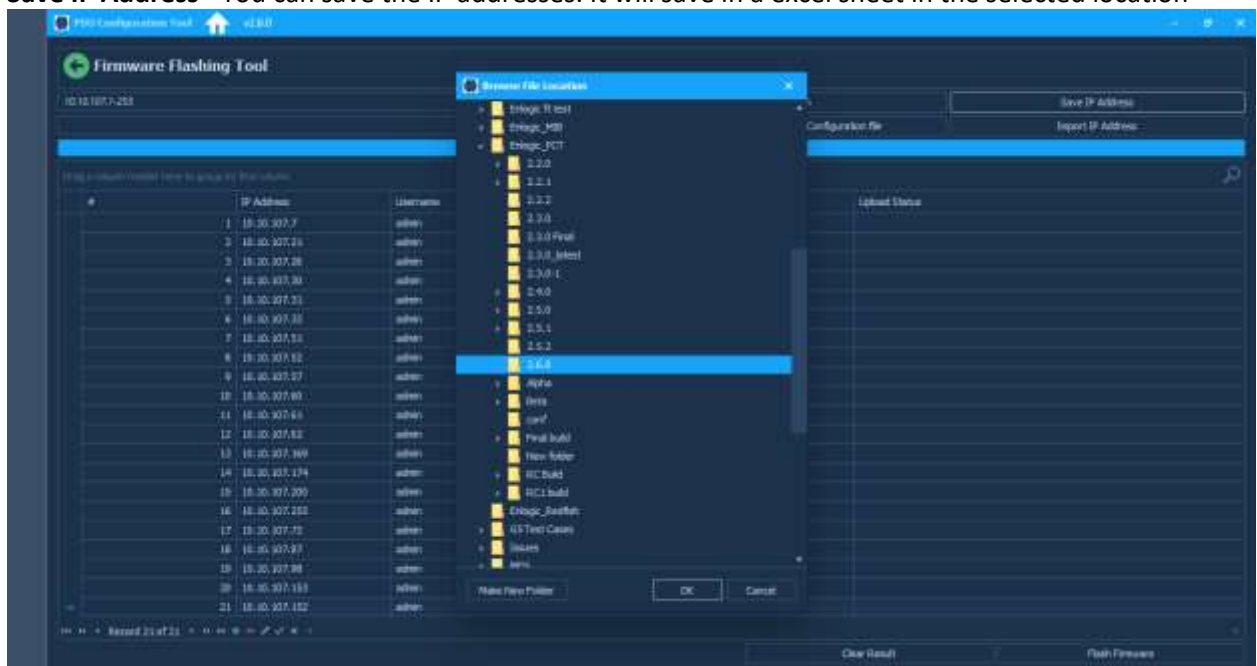
Clear Result - The Clear Result option will clear all the IP entries. Clicking on the button will ask for Confirmation.

Click on the **Yes** button to confirm and delete all the entries

Select **All Pingable IPs** to scan all the IPs in the network



Save IP Address - You can save the IP addresses. It will save in a excel sheet in the selected location



IP Address	Username	Password	Device Info	Upload Status
1 10.10.107.7	admin	12345678		
2 10.10.107.21	admin	12345678		
3 10.10.107.26	admin	12345678		
4 10.10.107.30	admin	12345678		
5 10.10.107.31	admin	12345678		
6 10.10.107.32	admin	12345678		
7 10.10.107.51	admin	12345678		
8 10.10.107.52	admin	12345678		
9 10.10.107.57	admin	12345678		
10 10.10.107.60	admin	12345678		
11 10.10.107.61	admin	12345678		
12 10.10.107.62	admin	12345678		
13 10.10.107.169	admin	12345678		
14 10.10.107.174	admin	12345678		
15 10.10.107.200	admin	12345678		
16 10.10.107.205	admin	12345678		
17 10.10.107.72	admin	12345678		
18 10.10.107.87	admin	12345678		

Import IP Address - You can also import the IP addresses from the excel sheet



From the IP addresses list, if you want to upload the firmware only on specified IPs then you need to delete the remaining IPs from the list by selecting the IP and clicking on the '_' button.

Edit the PDUs username and password before uploading the firmware file. It will show default username and password. To edit it click on the username and password field and edit it.

If you want to add any entry, then click on the '+' button. An empty field will appear, and you can enter the IP, username and password.

The pen symbol button is used to edit the field. Select the field you want to edit and click on the pen symbol.

The tick symbol is to end any edit and the close symbol is to close an edit.

Note: After IP scan, even though only one field is highlighted when you select it, the firmware/ conf file upload will happen to all the IPs in the list.

If you want to upload firmware or conf.ini file on only one IP, then either do the following:

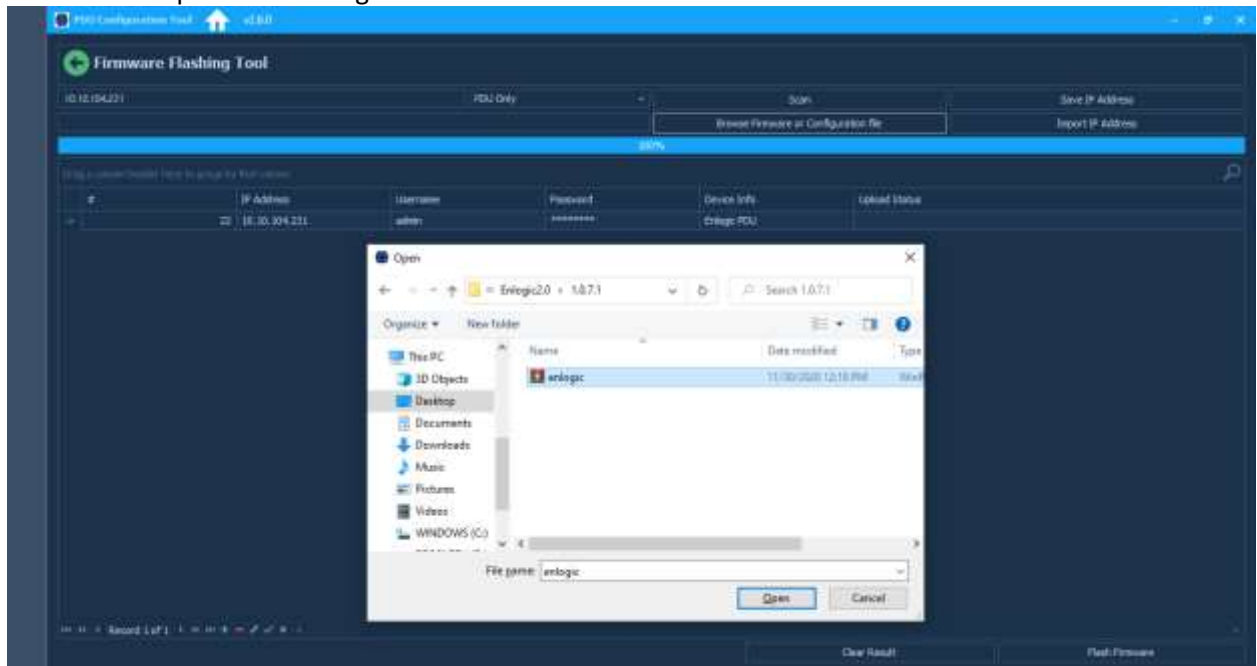
- If your IP is in the list, then remove all IPs by selecting it and removing it using the '_' button.
- You can skip IP scan and just enter the PDU details (IP, username and password) by clicking on the '+' button to add a new field.
- You can also give only your IP in the IP scan range and scan it. It will list out your IP with the default username and password.

PDU's with default passwords – For default PDU's enter the default password in the **Password** field. The PDU will get set back to the current password (i.e., 12345678) during Configuration/Firmware Upload.

Browse Firmware or Configuration File - Select the firmware file or the configuration file that you want to upload on the scanned IP addresses and click on the Upload Firmware.

Note: PCT tool will upload the Firmware only on the master PDU.

PCT tool will upload the configuration file on the master and all the slave PDUs connected.



New SKU Configuration File Creation

1. Select the SKU to create the conf.ini file.
2. After the SKU is selected, all the pdu settings will be enabled.



Creating Configuration File

1. Select each option, edit the settings, and click on the back button.
2. Clicking on the back button will auto save the settings.

Note: Do not click on the Home button to go to the next settings page after editing any page as it will not autosave the settings made.

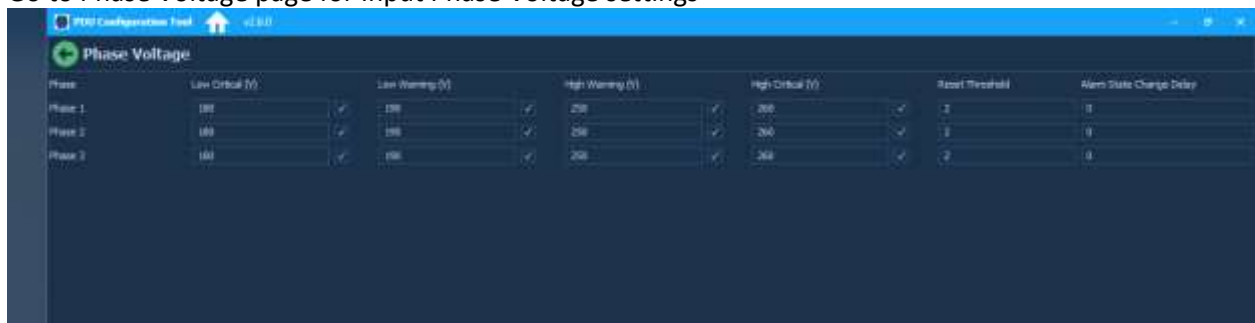
Input Settings

Go to Input Settings for Power Threshold settings and Outlet Delay settings



Phase Voltage Settings

Go to Phase Voltage page for Input Phase Voltage settings



Phase Current Settings

Go to the Current page for Input Phase Current settings



Control Outlets

Control Outlets page has Outlet Threshold settings and Outlet name change settings

Outlet Name	Low Critical (W)	Low Warning (W)	High Warning (W)	High Critical (W)	Reset Threshold	Change Delay (M)
OUTLET1	0	0	0	0	0	0
OUTLET2	0	0	0	0	0	0
OUTLET3	0	0	0	0	0	0
OUTLET4	0	0	0	0	0	0
OUTLET5	0	0	0	0	0	0
OUTLET6	0	0	0	0	0	0
OUTLET7	0	0	0	0	0	0
OUTLET8	0	0	0	0	0	0
OUTLET9	0	0	0	0	0	0
OUTLET10	0	0	0	0	0	0
OUTLET11	0	0	0	0	0	0
OUTLET12	0	0	0	0	0	0
OUTLET13	0	0	0	0	0	0
OUTLET14	0	0	0	0	0	0
OUTLET15	0	0	0	0	0	0
OUTLET16	0	0	0	0	0	0
OUTLET17	0	0	0	0	0	0
OUTLET18	0	0	0	0	0	0
OUTLET19	0	0	0	0	0	0
OUTLET20	0	0	0	0	0	0
OUTLET21	0	0	0	0	0	0
OUTLET22	0	0	0	0	0	0
OUTLET23	0	0	0	0	0	0
OUTLET24	0	0	0	0	0	0
OUTLET25	0	0	0	0	0	0
OUTLET26	0	0	0	0	0	0
OUTLET27	0	0	0	0	0	0
OUTLET28	0	0	0	0	0	0

Circuit Breaker

This page contains Circuit Breaker Threshold settings

Circuit Breaker	Rating (A)	Connected Outlets	Low Critical (A)	Low Warning (A)	High Warning (A)	High Critical (A)	Reset Threshold	Alarm State Change Delay
B1	16	1-6	0	0	11	14	1	0
B2	16	7-12	0	0	11	14	1	0
B3	16	13-18	0	0	11	14	1	0
B4	16	19-24	0	0	11	14	1	0
B5	16	25-30	0	0	11	14	1	0
B6	16	31-36	0	0	11	14	1	0

Datalog/Syslog settings

Logs page contains Data log and Syslog settings

Data Log Settings

Log Interval (1 - 100 min): 10

Enable Data Logging:

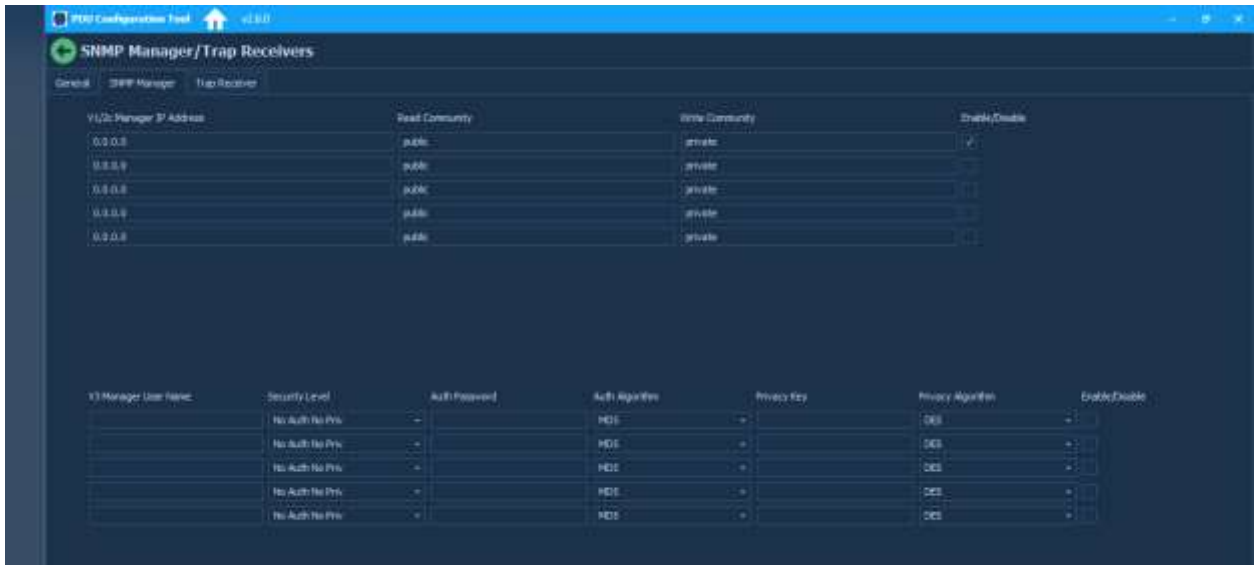
Syslog Configuration

Syslog Server Address: []

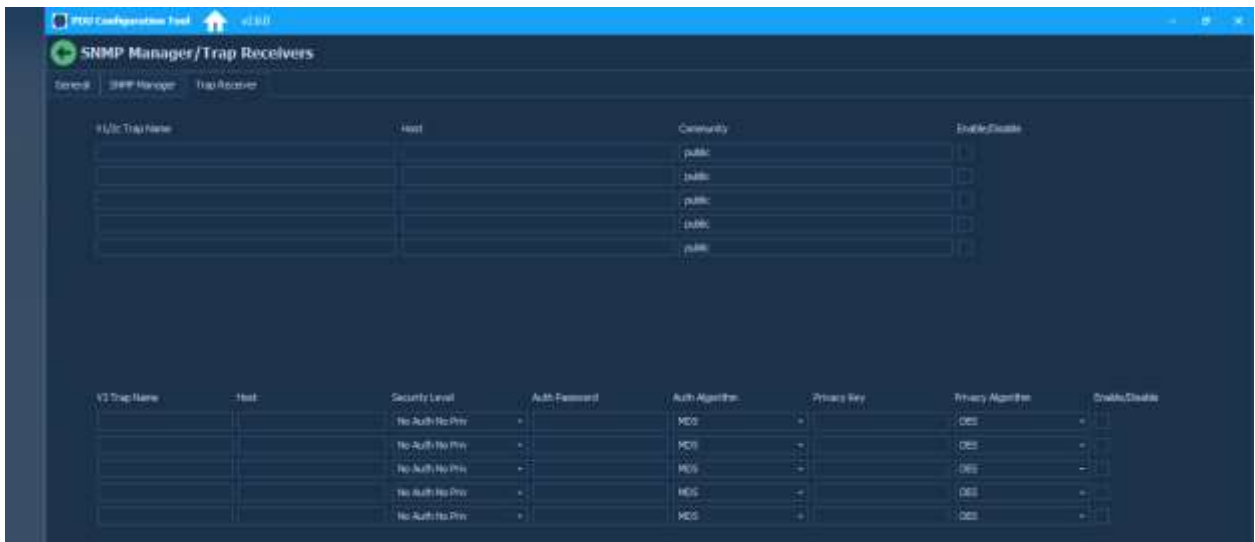
Syslog Server Port: 514

Enable Syslog Server Access:

SNMP Settings



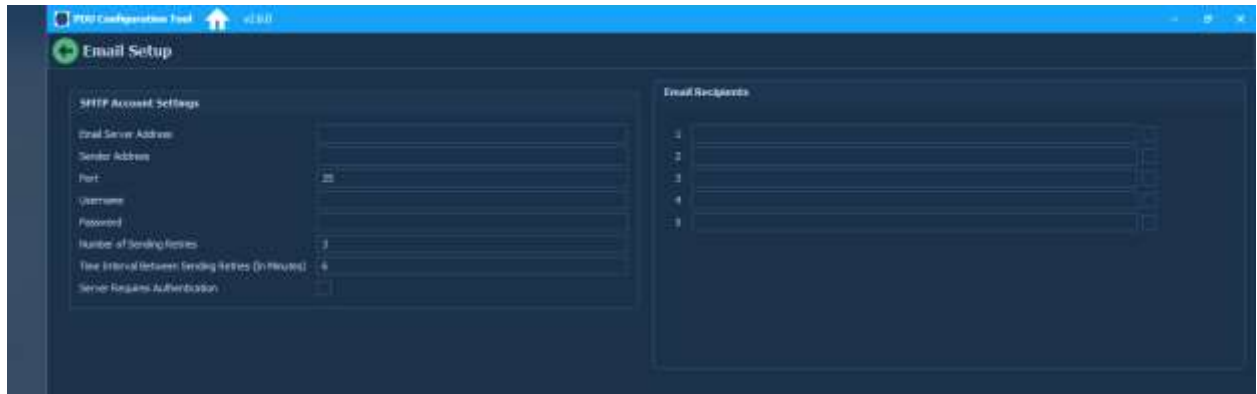
Trap Settings



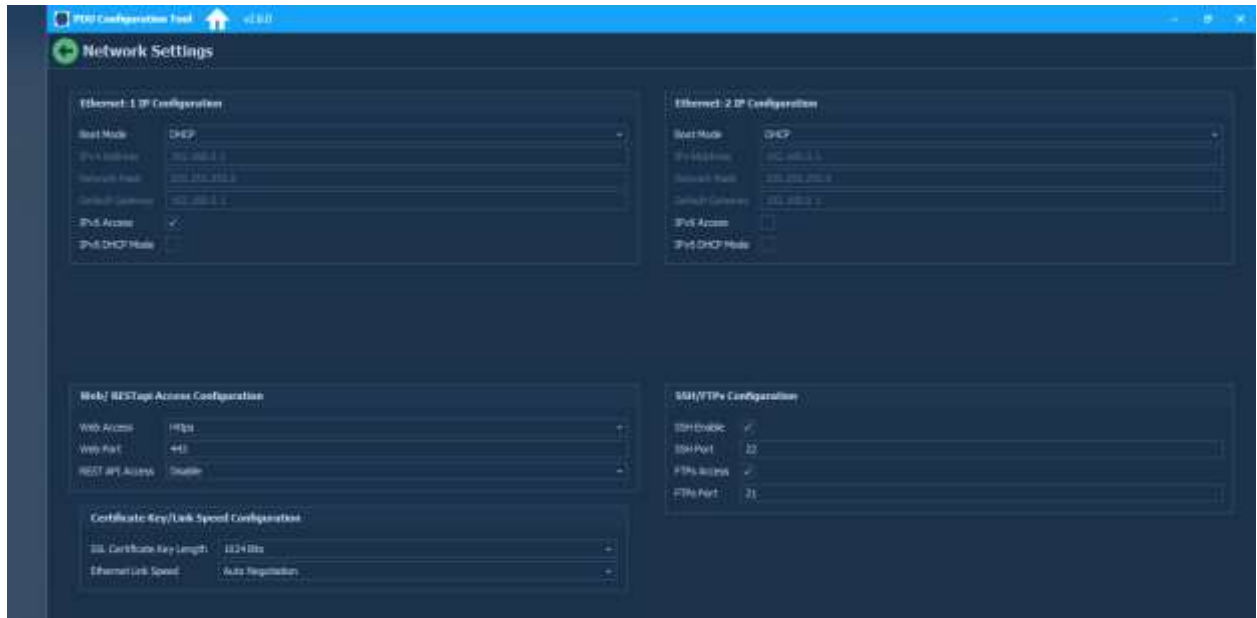
Date/Time Settings



Email Setup



Network Settings



User Settings

User

This page allows you to add new users with the roles – admin, manager and user

It also asks the user to enable/disable **Force Password change** at the time of Web UI login

When Force Password Change is Enabled for a user, the PDU will ask for password change after the configuration file is uploaded for that user

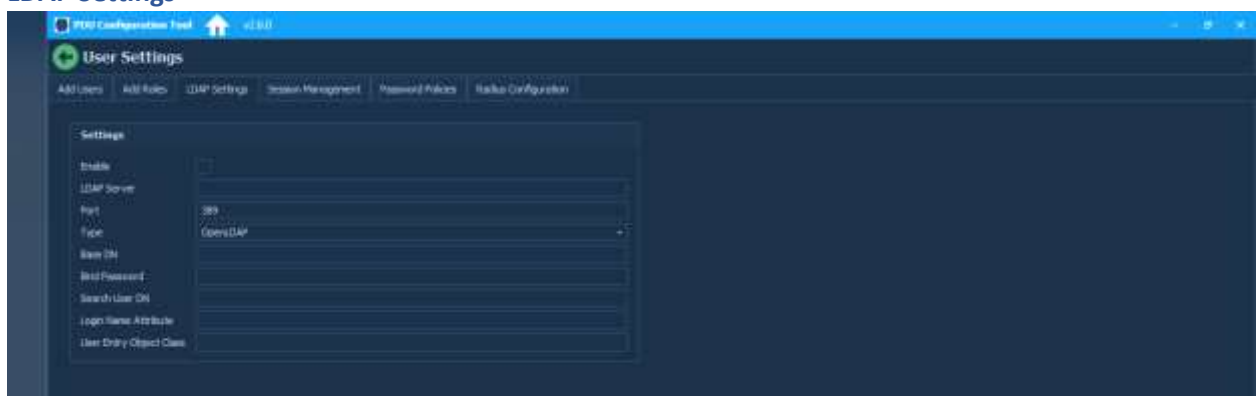
When Force Password Change is Disabled, PDU will just login with the current user and will not request for password change



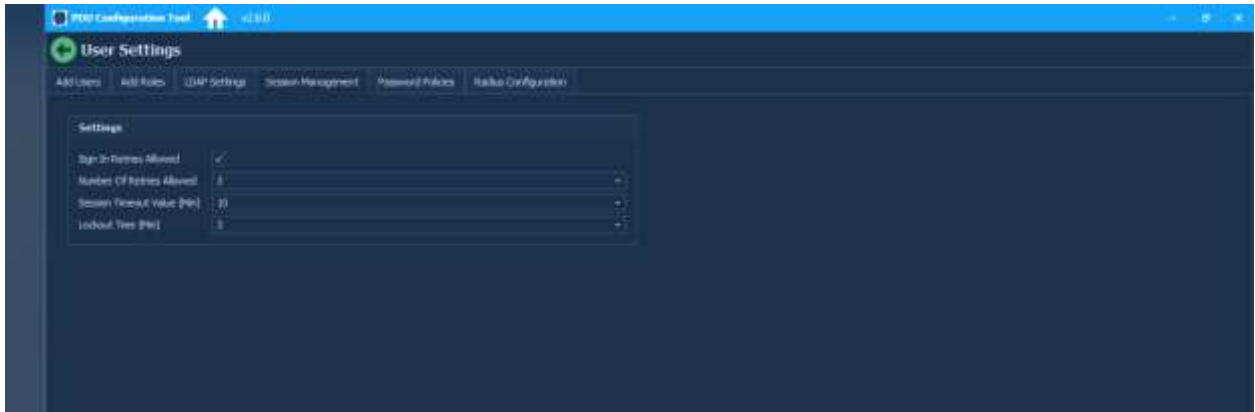
Roles



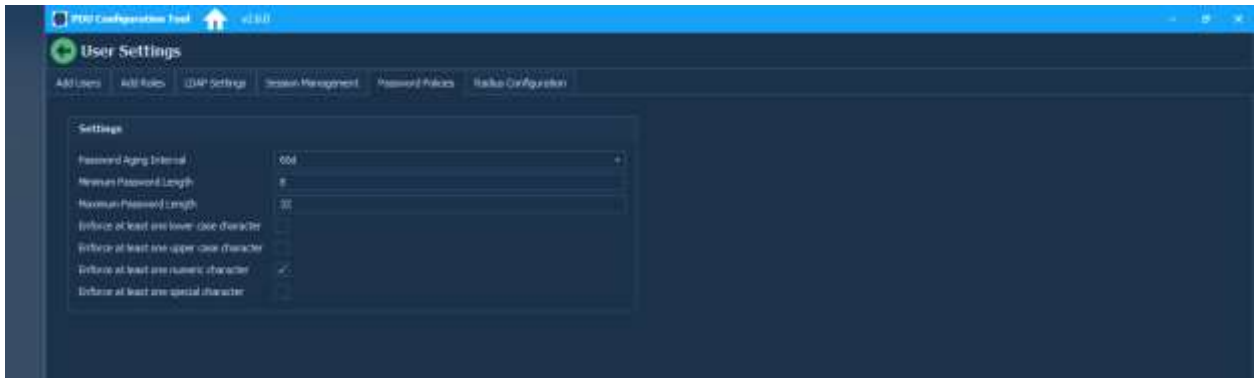
LDAP Settings



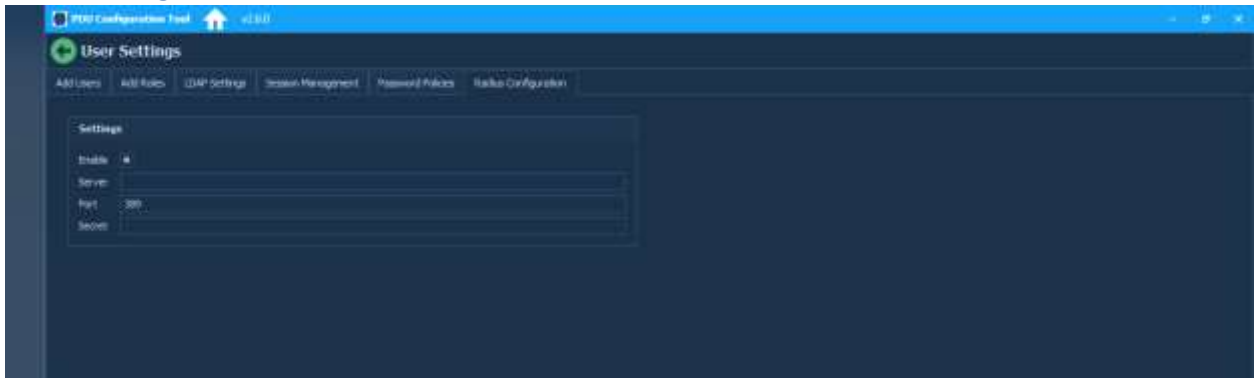
Session Settings



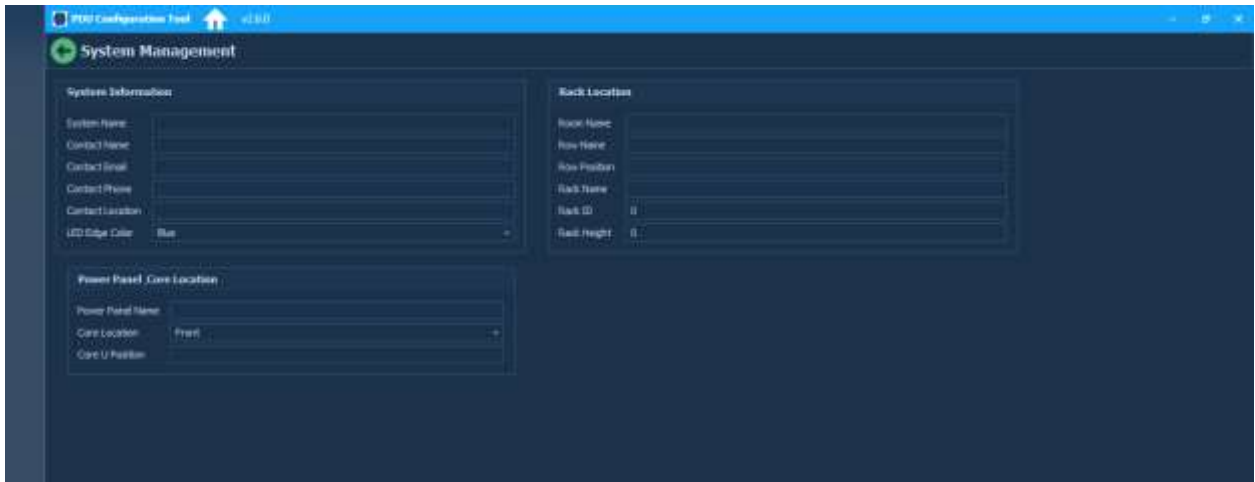
Password Policy



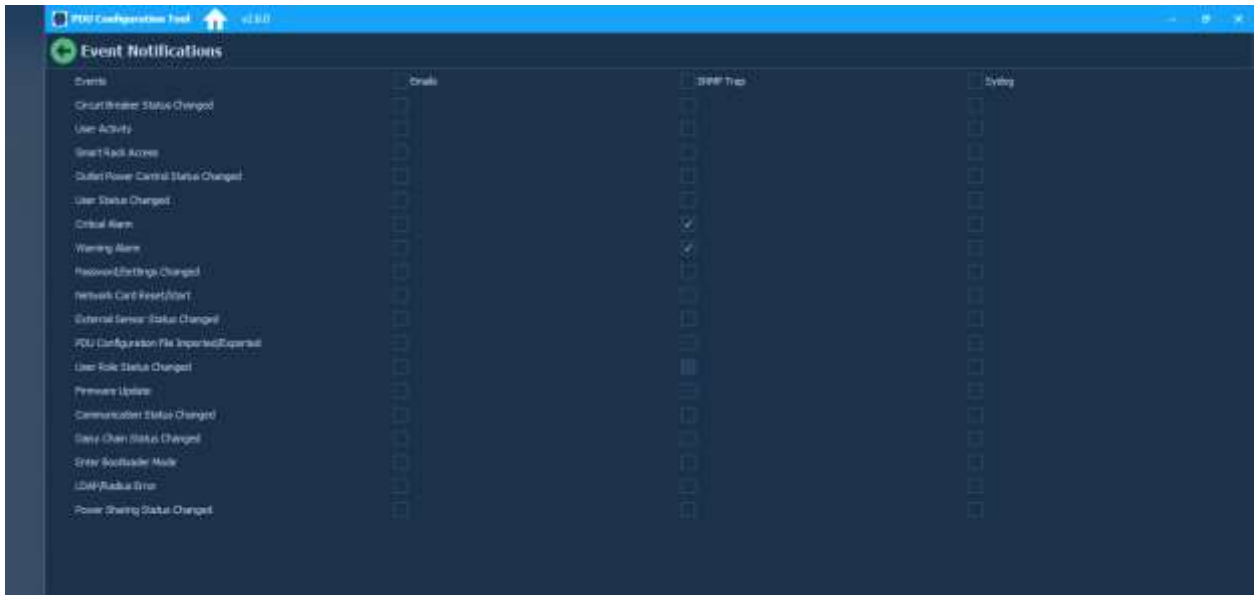
Radius Configuration



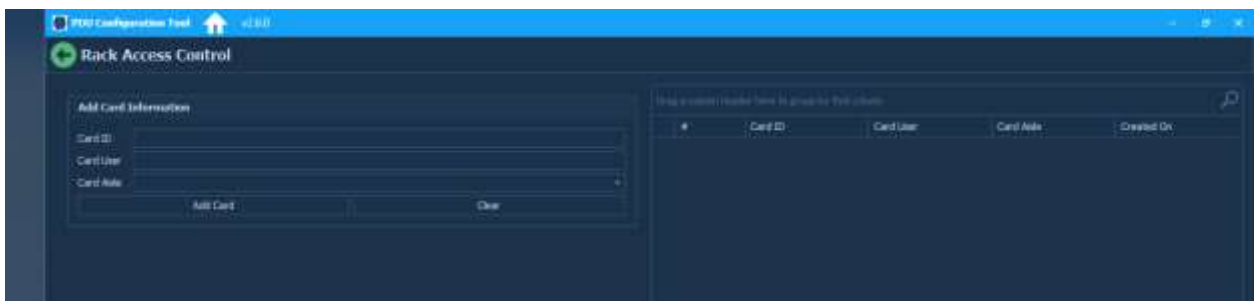
System Management



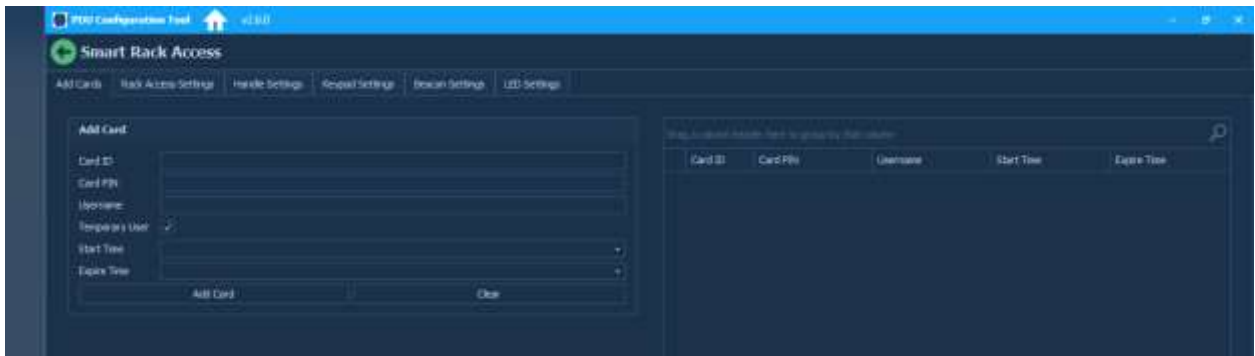
Event Notifications



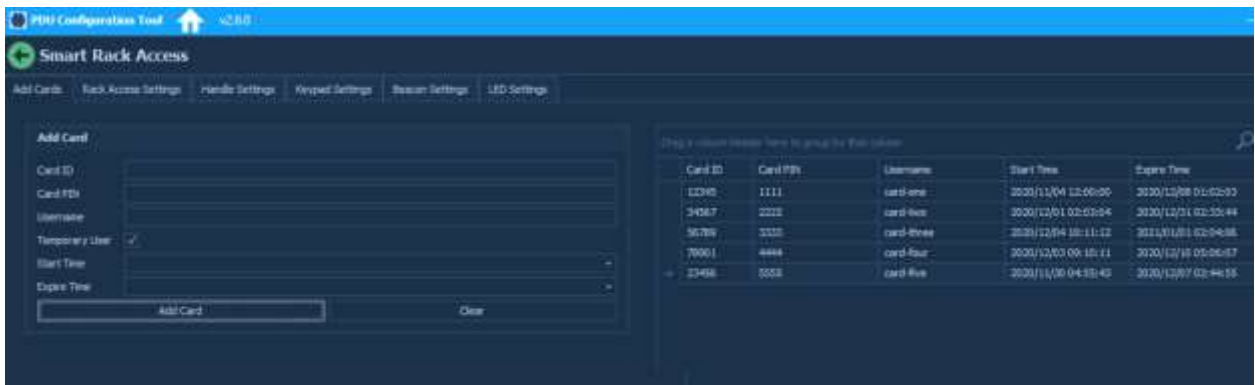
Rack Access Control



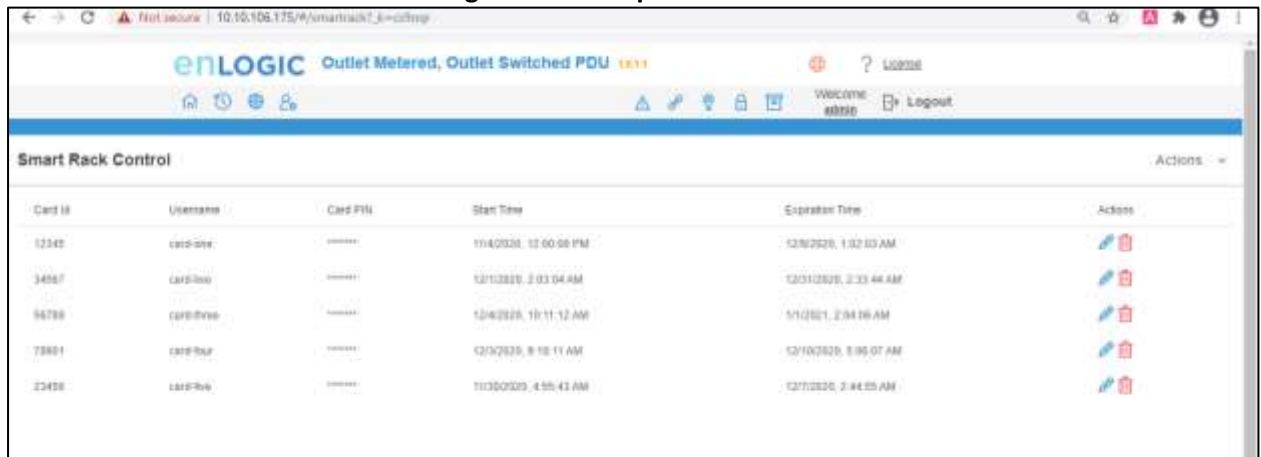
Smart Rack Access



Smart rack access cards added



Ehandle card details in GUI after configuration file upload:



Network Settings

Enter the start IP and end IP for Ethernet 0 and Ethernet 1 IP addresses with the correct Network mask and Default gateway

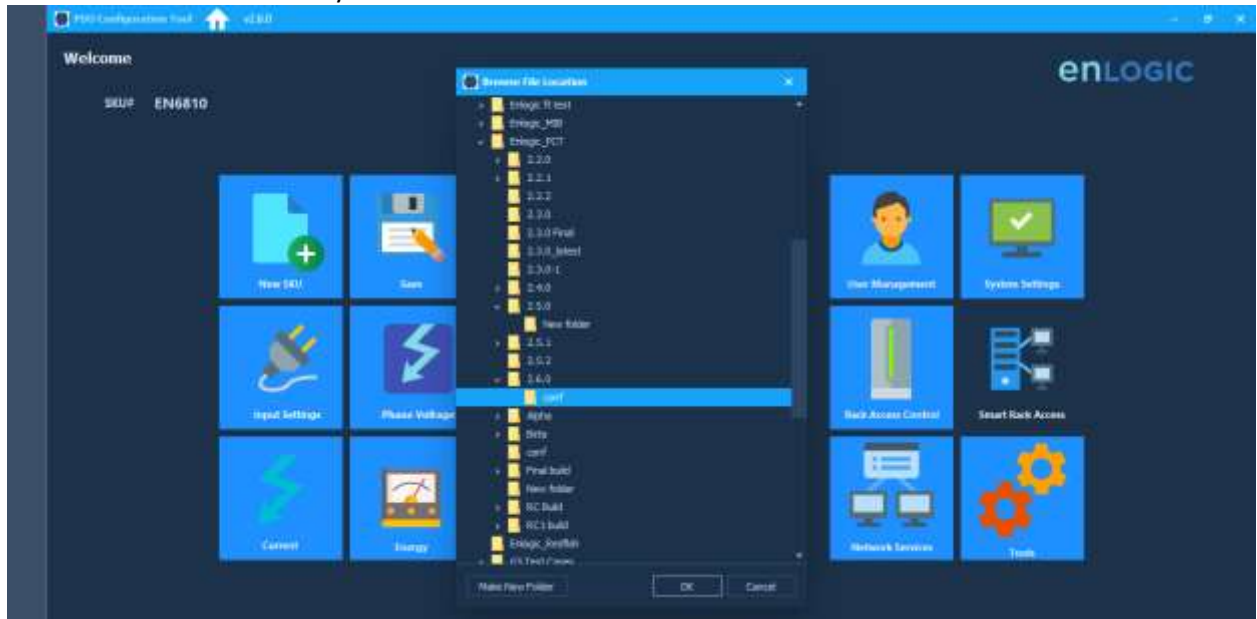


To upload the conf.ini file on multiple PDUs with ipeth0.cfg and ipeth1.cfg follow the below steps:

1. In Network Settings, enter the Eth0 and Eth1 IP addresses with correct Network mask and Default gateway and set it to **Static** mode
2. In **Network Services** page, enter the start IP and end IP for Ethernet 0 and Ethernet 1 IP addresses with the correct Network mask and Default gateway
3. Save the conf.ini file.
4. Four files will be saved:
 - conf.ini
 - econf.ini
 - ipeth0.cfg
 - ipeth1.cfg
5. Copy the three files - conf.ini, ipeth0.cfg and ipeth1.cfg into the USB and **upload the conf file through USB menu**
6. After upload the eth0 and eth1 IP will be assigned to the start IPs of eth0 and eth1
7. Now, upload to different PDU and the IP of Eth0 and Eth1 should be incremented

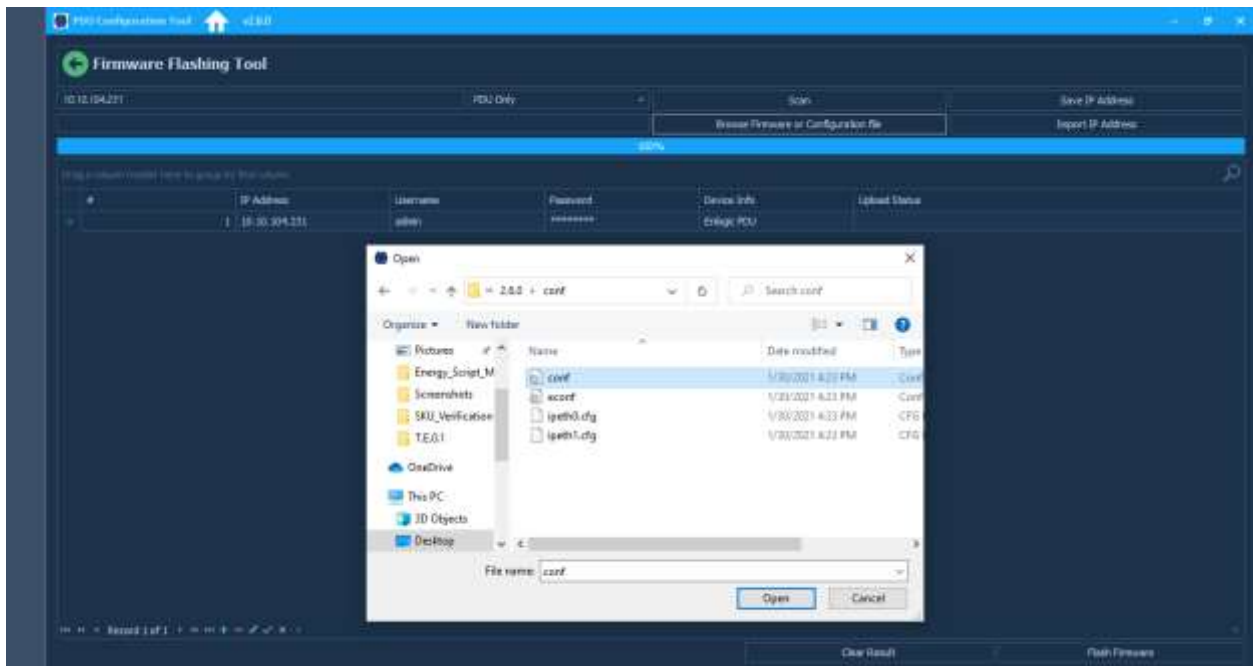
Saving Configuration File

Once all the settings are saved, click on the Save Configuration option
Choose the location where you want to save and click Ok



Uploading Configuration File Through PCT

1. Go to Tools page. Enter or Scan the IP address
2. Browse the **conf.ini** file
3. Edit the username and password before uploading the conf.ini file
4. Click on **Upload Configuration** to upload the file



Help Option



Appendix

- The PCT can scan all the IPs in the network and only the Enlogic PDUs based on the Scan IP selected and the PDUs with SNMP IP 0.0.0.0 enabled
- After IP scan the PCT will list out the IPs in the network with the default username and password. So, the user must edit the username and password accordingly
- The PDU password will be set back to the Current password (i.e., 12345678) for default PDUs after Firmware Upload. And, when the user logs in to the WebUI, it will not ask for Password Change and should be logged in with '12345678' password
- The PCT will upload on all the scanned IPs even when selecting on the specific IP. So, the user must enter only the IP you want to upload on or delete all the other IPs from the scanned list
- PCT will upload the Firmware only on the master PDU
- PCT will upload the configuration file on the master and all the slave PDUS connected
- After the settings added in the page click on the back button. This will auto save the settings made
- When New SKU is selected, all the previously added settings should go to default. But only threshold settings go to default. Other settings like Network Settings, System Settings, SNMP and User Settings shows the previous values
- For Static IP Incrementation, the Boot mode should be set to **Static** for both Ethernet 0 and Ethernet1 in Network Settings page of PCT