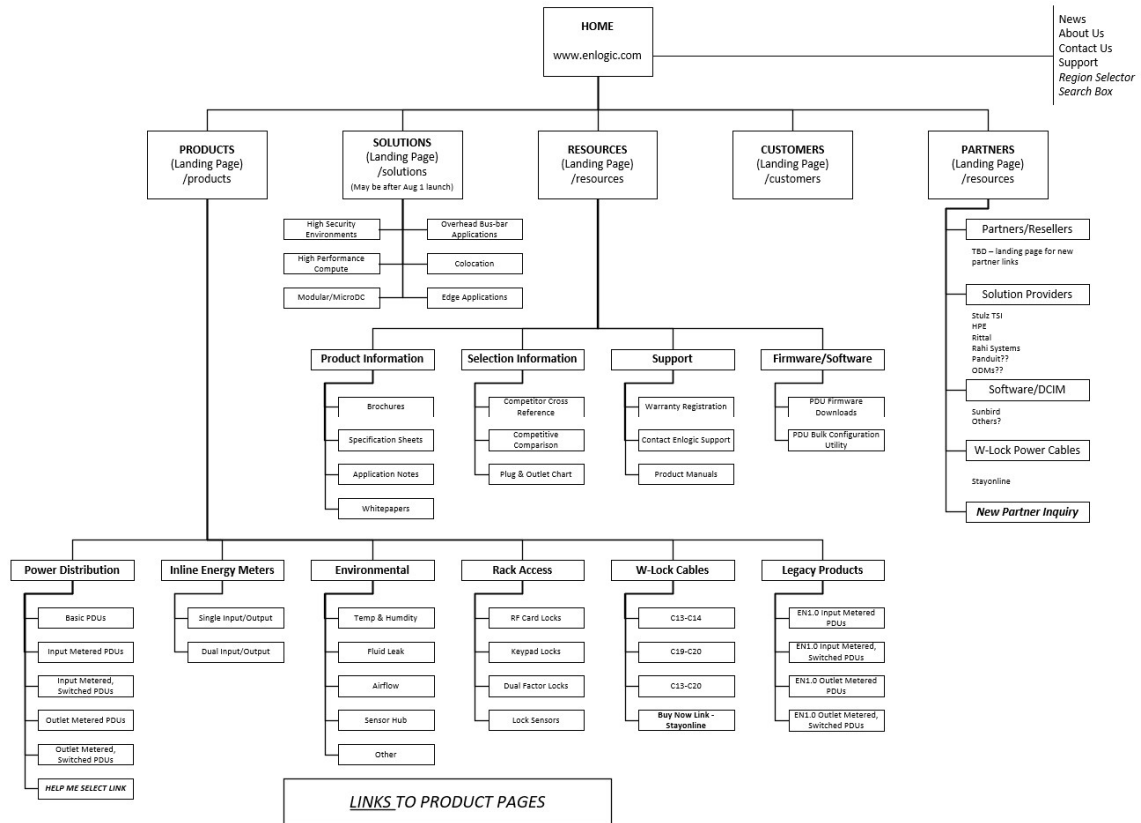


Design Specifications

- **Navigation Design** (as follows):



- **Web Design Options**
- **Product Family landing page**
- **Product templates** (Vertical PDU / Horizontal PDU & Energy Meter / Sensors, electronic locks & Accessories / Power Cables)
- **Graphics:** For graphics not related to our product images, will be designed by Matrix and we will review/signoff on these for branding purposes.
- **Spec Sheets in PDF format:** This will be generated using the same content that is displayed on each SKU page but in printed format.
- **Product Selector:** This will be designed to be expandable and collapsible on the high priority product categories that we specify.
- **Backend Design:** We will provide all of the product information (technical details, images, options, drawing files, etc), and this will be maintained by your team in a CMS.
- **Web Hosting:** You will manage the hosting of www.enlogic.com. We want to ensure that with this being hosted by you, there will not be any degradation of page speed or accessibility for users across the world.
- **Responsive Design:** The site shall be designed to be easily viewed and accessible on any browser (Firefox, Explorer, Edge, Chrome) as well on any mobile platform (iOS, Android, etc)